

Fig. S2. Differences in ITS-2 base composition between *D. communis* strain Hegewald 1974–35 and all strains of *D. protuberans* et var.: (1–5) *D. protuberans* var. *protuberans*, (1) Hegewald 2000–1, (2) Hegewald 1971–23, (3) Hegewald 1996–10, (4) AICB 141, (5) RMUO8; (6–13) *D. protuberans* var. *communitoides*, (6) CICALA 464, (7) Hegewald 1997–2, (8) UTEX 76, (9) EH 50, (10) ET93, (11) EH 52, (12) EH 84, (13) ET 85. Base exchanges in one strain only were neglected.

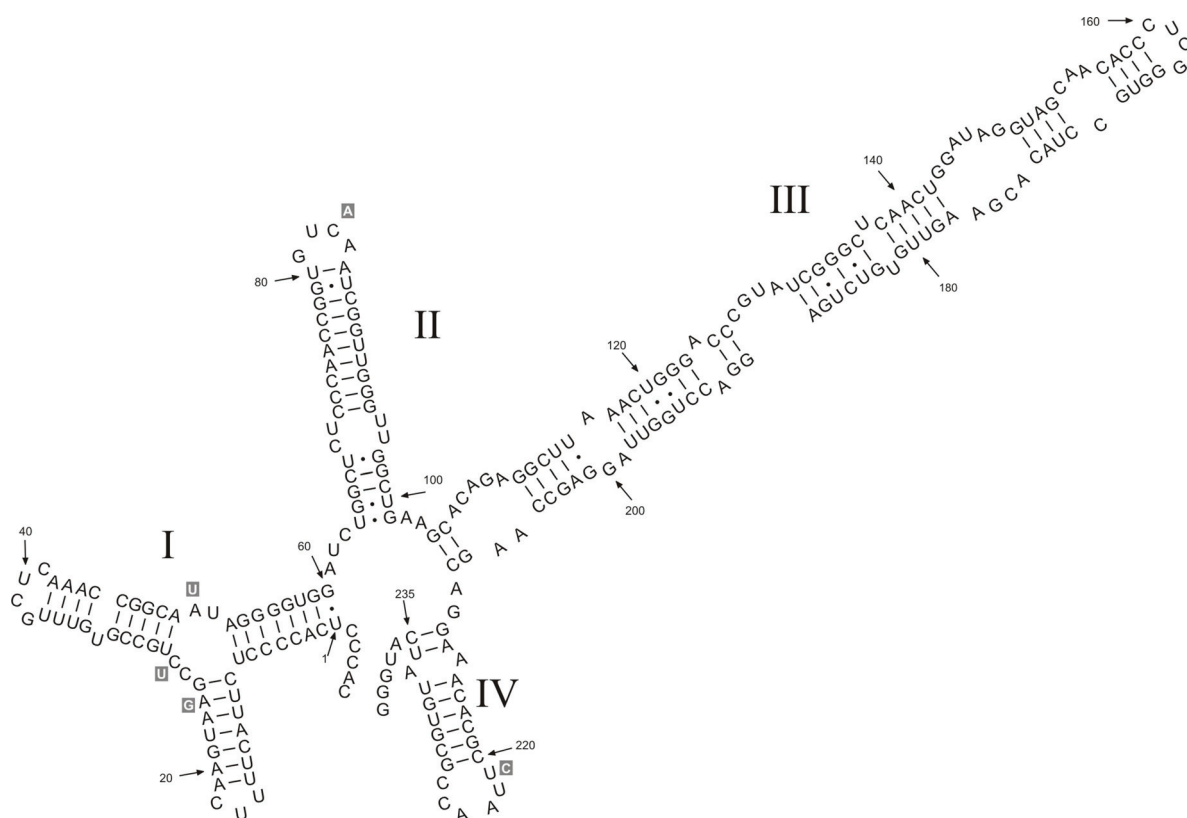


Fig. S3. Differences in ITS-2 base composition between *D. communis* strain Hegewald 1974–35 and all strains of *D. pseudocommunis* and its f. *verrucosus*.

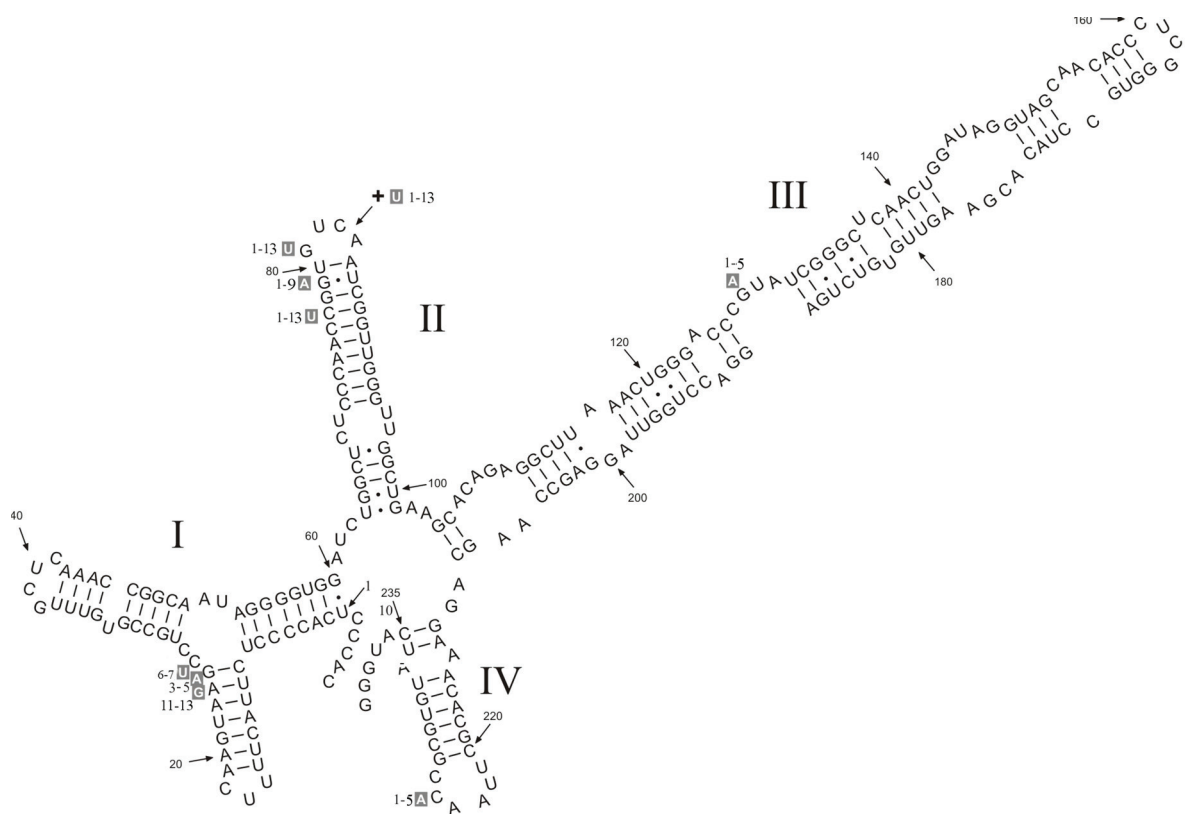


Fig. S4. Differences in ITS-2 base composition between *D. communis* strain Hegewald 1974–35 and all strains of *D. pseudoprotuberans*.

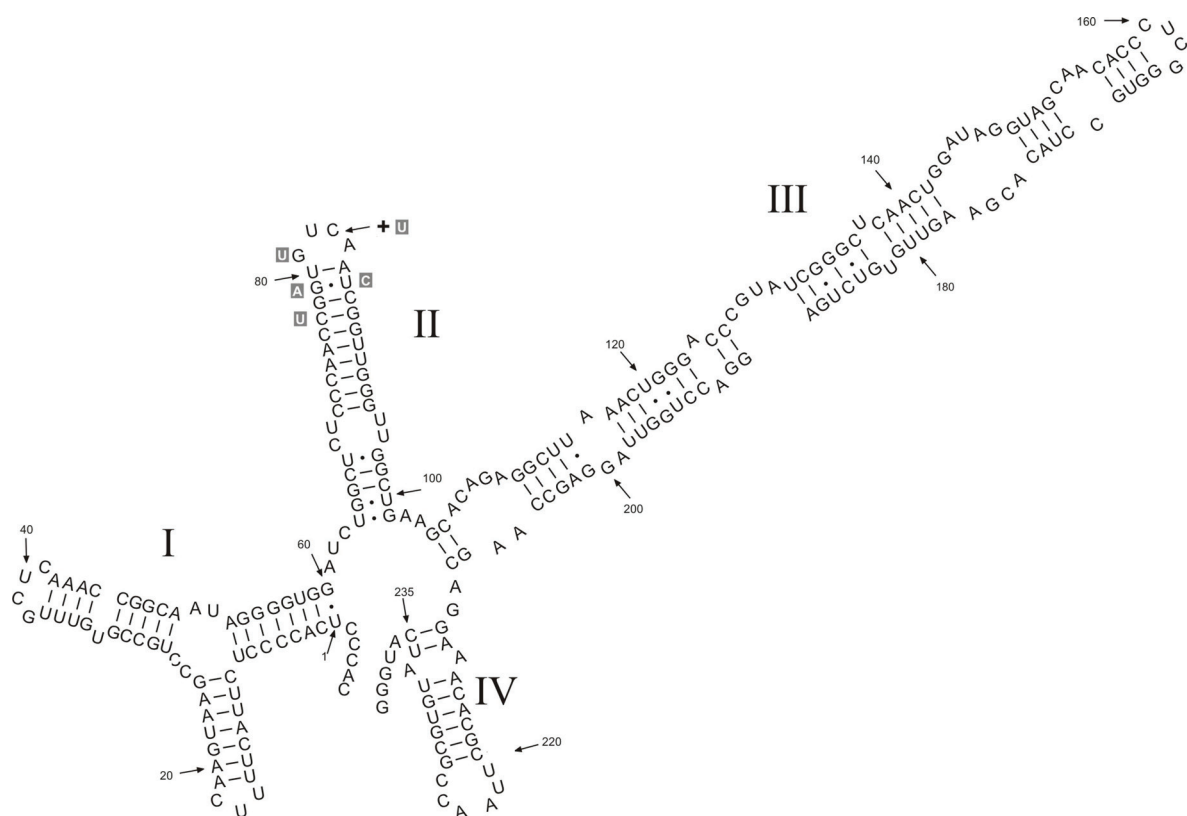


Fig. S5. Differences in ITS-2 base composition between *D. communis* strain Hegewald 1974-35 and two strains of *D. schmidtii*.

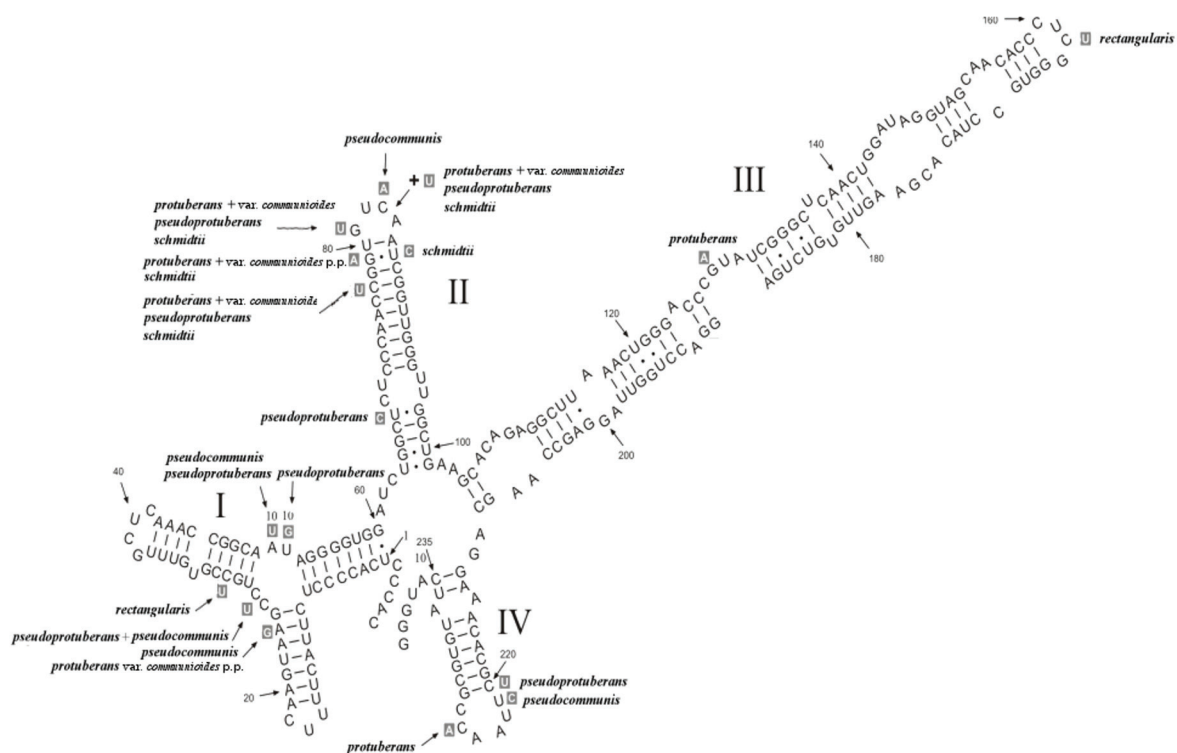


Fig. S6. Differences in ITS-2 base composition between *D. communis* strain Hegewald 1974-35 and all other taxa of the series *Desmodesmus*.